



WHERE ORDINARY GIRLS DO EXTRAORDINARY THINGS

2009 ANNUAL REPORT

**GIRL SCOUTS OF
NORTHERN CALIFORNIA**





EX·TRAOR·DI·NAR·Y

(EK-STRAWR-DN-ER-EE) ADJ.

1. Beyond what is ordinary or usual
2. Highly exceptional; remarkable
3. Special, wonderful, outstanding, rare, amazing, fantastic, astonishing, marvelous, notable, serious, phenomenal, wondrous, out of this world, extremely good

GIRL·SCOUT

(GÛRL-SKOUT) NOUN

1. Extraordinary

GIRL SCOUTS OF NORTHERN CALIFORNIA 2009 BOARD OF DIRECTORS

OFFICERS

Robin MacGillivray, Board President
AT&T

Sally W. Biggin, 2nd Vice President
Redwoods Community College District

Suzanne Moshier, 3rd Vice President
Retired, Sales & Marketing Executive

Ellen Richey, Secretary
Visa Inc.

Carolyn Worth, Treasurer
Retired, KPMG

GIRL MEMBERS

Madeline Atkinson

Abirami Rajasegaran

Berlyn McGriff-Ramirez, Girl Representative

DIRECTORS-AT-LARGE

Diana Bell
Peralta Community Colleges Foundation

Arletta K. Cortright
City of Fairfield

Teresa E. Gisske
Gisske Insurance Services

Henry Gusman
URS

Derek Kingham
Business Advisor, Self Employed

Shoba Krishnan
Santa Clara University

Dianne Lamendola
Safeway Inc.

Linda Lococo
First Street Insurance Agency

Dora Mao
Orrick, Herrington & Sutcliffe LLP

Leslie Miller
Northern Trust N.A.

Jil Polniak
KPMG LLP

Debra B. Rossi
Wells Fargo Bank

Ann Rutherford
Retired, Superior Court Judge

R. W. "Woody" Shackleton
Retired, IT Executive

Erica Wallenbrock
Spottswoode Estate Vineyard & Winery

Dear Friends and Members of Girl Scouting,

2009 was, by all accounts, an extraordinary year for Girl Scouts of Northern California. Faced with unprecedented economic challenges, our volunteers, staff, donors, parents, and community partners stepped up in an extraordinary way, responding with tireless dedication to bring quality, life-changing program to our girls.

In this Annual Report, you will see lots of facts, figures, and statistics that chart our journey through 2009 – but there are stories behind every number you see, countless stories that illustrate how Girl Scouts helped ordinary girls do extraordinary things.

This was the year when Supraja, one of our Gold Award recipients, traveled to India and led self-esteem classes for war-torn and poverty stricken girls who had lost their homes.

This was the year when Miyako went to camp for the first time, thanks to financial aid, and discovered a place where she finally fit in.

This was the year when Brandi, a teen from an at-risk school in our Got Choices program, found that Girl Scouting gave her a place to feel safe and to succeed.

This was the year when Crystal stepped into the great outdoors and experienced a connection with nature that revolutionized her feelings and her actions about the environment.

And this was the year when Carol built upon her opportunities through our Hispanic Initiative and Camp CEO to become the first in her family to attend a four-year university.

These Girl Scout stories only skim the surface of the extraordinary achievements girls celebrated in 2009. More than 50,000 girls discovered, connected, and took action throughout our 19 counties. And essential to these success stories was the leadership and assistance from 31,000 adult volunteers and innumerable community supporters who gave time, money, and services.

That kind of support, plus the vision and direction within the three-year strategic plan that our Board adopted last year, allowed our council to meet the challenges of 2009 head on. Moving forward toward our five core goals – sustainable growth, diversity and inclusion, vibrant programs, engaged volunteers, and financial strength – here are ways we stayed strong in fiscal year 2009:

- 45,000 girls participated in Girl Scout-run programs, learning about robotics, environmental activism, leadership, and much more
- 7,000 girls experienced Girl Scouting through outreach and other staff-led funded programs
- In our Cookie Program, 32,000 young entrepreneurs learned while they earned
- Our number of Daisy troops grew by 32 percent, to 540 troops
- 90 volunteer learning facilitators were trained to expand the Girl Scout Leadership Experience to all girls
- We debuted a Council-wide Choices Activity Guide that includes a fully-searchable online registration system
- Members completed over 5,000 online volunteer courses, including the four core leadership classes and grade-level modules

In the following pages, you will find highlights from our core programs including Girls Go Tech, Leadership, Green by Nature, Outdoor Program, and Outreach. You will hear firsthand from our girls, their parents, donors, and community members about the extraordinary things that were accomplished in 2009 through the Girl Scouts of Northern California.

Thank you for all you did in helping us get a girl started on her path in 2009!

Yours in Scouting,

Robin MacGillivray
Board President

Marina Park
CEO

OUR MISSION: Girl Scouts builds girls of courage, confidence, and character who make the world a better place.

OUR VISION: We create opportunities girls want and experiences that change lives.

In Girl Scouts, girls discover the fun, friendship, and power of girls together. Through a myriad of enriching experiences, such as extraordinary field trips, camping, community service projects, cultural exchanges, and environmental stewardship, girls grow courageous and strong.

FOR ALL GIRLS, EVERYWHERE

In 2009 Girl Scouts of Northern California served 50,000 girls and 31,000 adult members reflecting our diverse communities in 19 counties. Within our girl membership, 13 percent were from low-income communities, 17 percent were Hispanic, 13 percent Asian, and 5 percent African American.

Our promise of “Girl Scouting for all girls everywhere” is a core value for Girl Scouts of Northern California. We value diversity and inclusiveness, and our membership is representative of our diverse communities. Girl Scout membership does not discriminate on any basis, including race, ethnicity, sexual orientation, or gender identity.



WE CAN TALK ALL DAY ABOUT HOW GIRL SCOUTING CHANGES LIVES. BUT LET'S HEAR IT FIRST-HAND FROM OUR GIRLS, THEIR PARENTS, OUR DONORS, AND OUR COMMUNITY PARTNERS.

“The Girl Scouts have taught my daughter and me to be leaders, to know how to have that type of responsibility, but the best is working together as a team for the benefit of our community!”

– Lisa, Hayward Hispanic Initiative troop leader and Girl Scout mom

“Girl Scouting is more than just selling cookies; we are leaders in our own communities. We set goals, and complete them. But most important of all, we achieve tremendous and extraordinary accomplishments that will follow us for the rest of our lives.”

– Allison and Shelby, two of 1,330 girls who completed Counselor-in-Training or Program Aide Training at camp in 2009

“An investment in Girl Scouting, regardless of the size, is an investment in empowered girls – girls who make this world a better place, simple as that!”

– Joyce Richards, writer, former Girl Scout CEO

“When I have the Girls Go Tech girls in my computer lab, they know so much from being in the Girl Scout program that I use them to help tutor other students.”

– Stephanie, computer lab instructor in Oakland

“Being a Girl Scout lets me open up and helps me not be afraid of being myself.”

– Amanda, Girl Scout

“For me being a Hispanic Girl Scout is like being a growing flower showing off its colors and origin. Girl Scouts has showed me no boundaries ... of discrimination, sexism, and age. Girl Scouts’ Hispanic initiative has led me to believe that the road to college is a possibility for me and other girls among our community. Girl Scouts has taught me that no matter my gender, race, or age I can change the world if I put my mind and heart to it.”

– Karen, Girl Scout

“I have financially supported Girl Scouting all my adult life, because I am convinced the diversity of the Girl Scout program provides one of the best educational experiences a girl can have. Girls have a chance to try many different things in so many areas all in an environment that builds character.”

– Byrd Lochtie, Eureka: consultant, community activist, former troop leader, Girl Scout mom

“When I’m doing Girl Scouts, I feel safe.”

– A participant in a Girl Scout after-school nature program in a Contra Costa neighborhood plagued by violence

GIRLS GO TECH



Today, over 60 percent of all jobs require technology skills. Research tells us girls are not being encouraged as well as they could be in the areas of math, science, and technology. To bridge these gaps, Girl Scouts of Northern California launched Girls Go Tech, connecting girls with technology through NASA overnights, hands-on robotics teams, in-school and after-school science and career exploration.

"Imagine if you could spend the day with a room full of female scientists and engineers that were off to Antarctica on Monday, running the Mars Mission last week, and talking to astronauts on the way to the moon from NASA last month: Imagine if you knew as a Girl Scout that math and science were SO COOL that they would help YOU change the world!"

- Tamara, Girl Scout mom

Girls Go Techbridge

Through an exciting collaboration between the Girl Scouts and Techbridge, program boxes in design, electricity, and green building are available for leaders to checkout. Girls can create ping pong ball catapults, learn soldering, make a robot, and design green dollhouses.

"Humboldt and Del Norte counties are very rural with a higher than average poverty rate ... the portability, low cost, and high quality of the Techbridge materials and lesson plans were especially welcome. The ability to deliver a quality science and technology program in any low tech setting, be it a school classroom, church hall or grange hall is exactly what is required in our rural setting."

- Derek, troop leader and GS NorCal board member

Girls Go Tech Summer Academy

We teamed up with UC Berkeley and Best Buy's Geek Squad for Geek Squad Summer Academy 2009, where 75 girls created their own websites, explored the wonders of movie making, built a personal computer, and interacted with technology faculty and students.

Universe Quest

Universe Quest, an after-school science program funded by the National Science Foundation, inspires girls to connect with science while empowering them with the skills they need to succeed. At the ASA Community Science Center Summer Institute in West Oakland, 28 girls participated in hands-on astronomy activities and 3-D game development and also explored careers in these fields through visits to NASA Ames, Chabot Space and Science Center, and Berkeley Space Sciences lab.

Girls Go Tech 101 Afterschool Program

Our Girls Go Tech after-school programs provide a hands-on science and technology curriculum and career exploration while also filling an emotional void for many students, like this eighth-grader: "I appreciate making new friends and having a place where I feel important. I am lonely and don't get much attention at home."



OUTDOOR PROGRAM



Much more than s'mores and silly songs, our Girl Scout camp experience helps empower girls through exciting and fun activities that build self-esteem, enhance teamwork, develop skills, and increase awareness of the environment. In 2009, over 10,000 girls experienced the fun, friendship, and adventure found at one of our 29 resident, day, and family camps led by staff and by volunteers.

"All last year at school I wasn't sure if people liked me, but I found out that at camp, actually, everyone likes me."
- Miyako

Miyako's story epitomizes the profound impact that the Girl Scout camp community has on girls. Thanks to generous donors to our Opportunity Fund, Miyako was one of 314 girls who went to camp in 2009 through financial assistance. At Skylark Ranch she found a place where she finally felt she fit in, and Miyako returned home to parents who were surprised and impressed with her dramatic change. "In our eyes, our daughter carries herself a little taller, with roots a little stronger, and her heart a little more sure, because of her experiences at camp," her mother said.

Council-Run Camps

Our six staff-run resident camps saw a 17 percent increase in registrations in 2009 over the previous summer. More than 3,400 girls attended Camp Metro day camp and resident camps at Sugar Pine, Skylark Ranch, Hidden Falls, Deer Lake, and Bothin. We had 355 campers at Family Camp, including 125 campers at our first-ever (and sold out) family camp at Sugar Pine.

Just look at what campers learned:

- "I learned that I'm brave."
- "I can handle being on my own."
- "I learned that giving nature respect is part of universal respect."
- "It doesn't really matter whether you're cool at camp."
- "I will remember it forever."
- "I used to just love nature. Now I *really* love nature."

Volunteer-Run Community Camps

These fun, enriching, local day and resident camps allow girls to extend their Girl Scout experience into summer and offer leadership opportunities. Last summer, 7,000 girls took part in 23 volunteer-run community camps. Over 1,750 committed volunteers led 19 day camps and 4 resident camps.

"We cry each year during the wish boat ceremony because we are sad camp is over, we jump into the refreshingly cold lake twice during session to do the polar bear swim, we sing the most amazing songs and we get to be with even more amazing women for 10 days in the wood... There is something very special at Camp Two Sentinels, the people, the site, the incredibly good food and the love that goes into and comes out of that place is wonderful."

- "Sushi," leader and parent at Camp Two Sentinels

GREEN BY NATURE

For Girl Scouts, green is not just another color - it's a commitment from the Girl Scout Law to "use resources wisely." Through our Green by Nature initiative, Girl Scouts of Northern California incorporates environmental activities with every age level, beginning with Daisy Girl Scouts in kindergarten. Today, through hands-on learning and partnerships, Girl Scouts across Northern California explore ecosystems and wildlife, learning to value and protect them, in urban, suburban, and rural locations.

Our Green by Nature goal is to connect girls to nature and the environment so they embrace it. Once they do, we can create opportunities to foster leadership around what it takes to protect the natural environment around them for a lifetime. In 2009, 15,000 girls learned about environmental stewardship through our Green by Nature initiative.

Green Biz Camp

In summer 2009, 16 girls from underserved communities in the greater Bay Area participated in our first ever "GreenBiz" camp - an 11 day camp at the University of San Francisco, led by our Council's Hispanic Initiative, Outreach, and Girl Scouts Save the Bay staff in partnership with NFTE (National Foundation for Teaching Entrepreneurship). Between field trips to learn about the environment and meet green entrepreneurs, networking events and a meeting with a state senator, each girl worked with a mentor to develop a rigorous business plan for her own green business. As a result of this camp, three of the girls have already started implementing their business plans and have clients. Another small group has formed to start working on their Girl Scout Gold Awards together with a service project centered around green business.

Girl Scouts Save the Bay

Girls Scouts Save the Bay (GSSTB) is the Girl Scouts of Northern California's "bold audacious project" – girls, their families, neighbors and adult leaders working to protect and restore the bay, the creeks, the rivers and the ocean in their watershed. Since its inception four years ago, GSSTB has engaged 6,000-plus youth in environmental stewardship. This initiative offers badge work, restoration, stewardship activities, community service and outreach programs for underserved communities – all geared to help girls work together to change their environment for the better.

"Girl Scouts to my daughter is synonymous with 'Save the Bay and the animals.' Thank you for all the work you do to offer the Girl Scouts such varied opportunities to teach them about the natural world and their responsibility to help take care of it."

– Mary, Daisy troop leader and parent



LEADERSHIP

Secretary of State Hillary Rodham Clinton. Dr. Sally Ride. Secretary Madeleine Albright. Venus Williams. Justice Sandra Day O'Connor. Linda Chavez-Thompson. Vera Wang. Senator Carol Moseley-Braun. All pushed boundaries, pushed themselves, and are indisputable leaders in their fields. And all were Girl Scouts.

Our mission – Girl Scouting builds girls of courage, confidence and character who make the world a better place – gets a girl started on her own personal path to leadership, whether she prefers the “front of the room” person-in-charge style of leadership, or a more collaborative type of leadership, working with others to accomplish shared goals.

The Girl Scout Leadership Experience

Last year, we unveiled the new Girl Scout Leadership Experience, the next step in Girl Scouting’s mission to develop today’s generation of girl leaders. Our Leadership Journeys allow girls at every age level to build leadership skills through three keys to leadership:



Discover: Girls understand themselves and their values and use their knowledge and skills to explore the world;

Connect: Girls care about, inspire and team with others locally and globally;

Take Action: Girls act to make the world a better place.

Girl Scouting’s Highest Honor: The Gold Award

To earn our prestigious Gold Award, the girls spend months or even years completing council-guided training and requirements, culminating in an extensive service project that makes a difference in their community or even across the world. In 2009, Girl Scouts of Northern California proudly conferred this honor on 169 outstanding young women. Another 457 girls earned their Silver Award last year, a stepping stone to the Gold Award. Our Gold Award girls worked an incredible 13,520 hours on projects, including:

- **Supraja.** When the Northern California teenager learned that young girls in India were forced to move away from their homes because of poverty or religious violence, she traveled around the globe to lead programs in schools that helped these girls with self-esteem.
- **Becky.** She took the lead in the South Bay during a week-long environmental crusade where she created and implemented practical ways for her school and community to be eco-friendly, including giving out energy-efficient light bulbs, planting indigenous trees, and constructing kiosks for recycling.
- **Emmy.** Her creative literacy program in a Mt. Shasta elementary school removed shame and fear from reading aloud for young students - with a little help from a poodle in her “Reading to Dogs” program.

Lead the Way

At our 24th annual Lead the Way Leadership Conference for Young Women, more than 130 teens spent the weekend learning to take charge of their future by enhancing interviewing skills, their ability to lead meetings, and communicating effectively.

Girl Scout Destinations

In 2009, 22 girls from Girl Scouts of Northern California traveled on international and national Girl Scout Destinations to experience life along the Amazon, kayak in Puget Sound, explore ancient tribes in New Mexico, and immerse themselves in the cultures in India and Costa Rica, to name a few.

OUTREACH

We make Girl Scouting available to all girls, everywhere, through innovative outreach programs that served 6,000 girls in 2009 in migrant housing, homeless shelters, rural areas, low-income communities and detention centers. Of our 50,000 girls, 13 percent of our Girl Scouts are from low income families and eight percent live in rural areas. Outreach helps us bring Girl Scouting to girls so we can help them unleash their potential.

“We are capable of being so much more than ordinary.”

– Carol

A Hispanic teen from Hayward, Carol didn't think Girl Scouting was an option for her. “When I was a kid, I thought Girl Scouting was too expensive, that it would cost lots of money that we didn't have.” Carol was recruited to our female business mentoring program, Camp CEO, through our Hispanic Initiative. After four years of opportunities, including co-leading a new Hispanic troop with her mother, Carol proudly became the first in her family to enroll in a four-year university.



Girl Scout Hispanic Initiative

Our Hispanic Initiative was born out of concerns that while the Hispanic population was rapidly increasing, Girl Scout's Hispanic membership numbers remained proportionately lower. In 2009, 8,380 Hispanic girls participated in Girl Scout troops and activities including rock climbing, Golden Gate Bridging, GreenBiz Camp, women's conferences, and more. We boosted our bilingual staff and volunteers to further involve Hispanic families in Girl Scouting.

Rural Communities

We stepped up our efforts in 2009 to bring Girl Scouting to our 4,000 rural girls. Especially successful were Girl Scout programs-in-a-box, where programs like Girls Go Tech and Green By Nature are packaged conveniently with hands-on adaptable activities. We also saw visionary volunteers create Camp Tall Trees, a resident camp for 45 rural girls outside Eureka.

Migrant Day Camp

Last summer, 216 children participated in Girl Scout Migrant Day Camp in Gilroy, which focused on positive behavior and violence prevention for the entire family. Girls earned good behavior tickets and took home books, school supplies, food, and toys. Afterward, 50 parents of day camp participants participated in positive parenting skills classes.

Got Choices

Through our Got Choices programs in Santa Clara and Sonoma counties, we seek out girls in places where it's easy for them to be forgotten by society – detention centers and high schools in high-risk areas. These Girl Scouts include: girls in gangs, girls who have experienced abuse and neglect, girls who have been raped or molested, girls whose parents are in jail, girls who are already parents themselves.

We don't give up on girls like these. In 2009, we empowered 650 girls in Santa Clara and Sonoma counties to make healthy choices, build self esteem and skills, and see new possibilities for their future. And for teens like these, it pays off: Got Choices gives them a place where they feel safe, and gives them the confidence to plan their futures.

“Really, Girl Scouts helps us be better decision-makers because it makes you think first before you act. You can finally see how one little mistake can change the whole direction of your life.”

– A Got Choices participant

The Girl Scout Promise

On my honor, I will try:
To serve God* and my country,
To help people at all times,
And to live by the Girl Scout Law

** The word "God" can be interpreted in a number of ways, depending on one's spiritual beliefs. When reciting the Girl Scout Promise, it is acceptable to replace the word "God" with whatever word your spiritual beliefs dictate.*

The Girl Scout Law

I will do my best to be
honest and fair,
friendly and helpful,
considerate and caring,
courageous and strong, and
responsible for what I say and do,
and to
respect myself and others,
respect authority,
use resources wisely,
make the world a better place, and
be a sister to every Girl Scout.



GIRL SCOUTS OF NORTHERN CALIFORNIA

STATEMENT OF ACTIVITIES

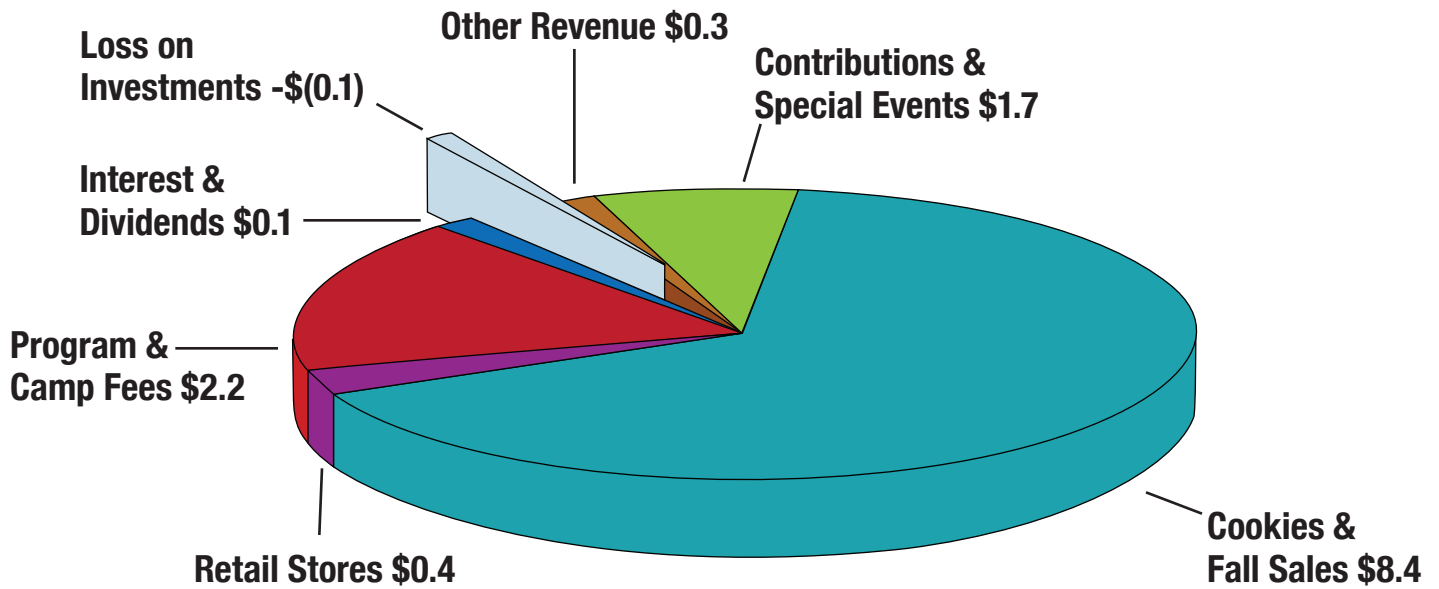
for the year ended September 30, 2009

Public support and revenue:	
Annual giving	\$ 446,103
Gifts or grants from foundations/corporations	429,102
Workplace campaigns	76,171
Gifts in kind	242,627
Other gifts	101,053
Government grants	199,809
Total public support	<u>1,494,865</u>
Special events:	
Gross revenue	354,883
Less costs of direct benefit to donors	(119,479)
Net special events	<u>235,404</u>
Program revenue:	
Product Sales:	
Gross revenue	15,689,135
Cost of sales	(7,325,382)
Net product sales	<u>8,363,753</u>
Program fees	2,293,546
Less financial aid	(63,732)
Net program fees	<u>2,229,814</u>
Sales of merchandise	
Gross receipts	1,090,617
Less cost of sales	(717,601)
Net sales of merchandise	<u>373,016</u>
Total program related revenue	<u>10,966,583</u>
Other revenue (losses)	
Interest and dividend income	142,975
(Loss) on investments	(110,192)
Miscellaneous income	97,220
Property income	154,764
Total other revenue	<u>284,767</u>
Total public support and revenue	<u>12,981,619</u>
Expenses	
Program services	11,388,115
Supporting services:	
Management and general	2,653,223
Fundraising	890,800
Total supporting services	<u>3,544,023</u>
Total expenses	<u>14,932,138</u>
Change in net assets	<u>(1,950,519)</u>
Net assets, restated as of beginning of year	<u>16,533,767</u>
Net assets, end of year	<u>\$ 14,583,248</u>

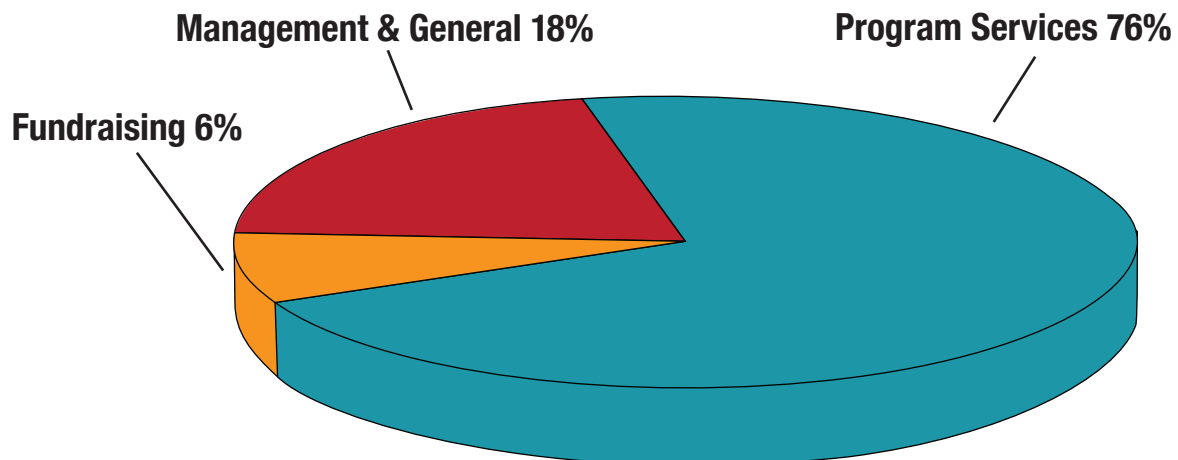
GIRL SCOUTS OF NORTHERN CALIFORNIA FY2008

Our Revenue

(in millions)



Our Expenses



Event Highlights

PERSON OF DISTINCTION RICHARD N. GOLDMAN

In 2009, we honored Richard N. Goldman with the Girl Scouts Person of Distinction Award. Five years ago, Richard shared Girl Scouts' vision of a "bold audacious" idea – and helped launch Girl Scouts Save the Bay, connecting girls with nature and building the next generation of environmental stewards. This lunch event, held at the Julia Morgan Ballroom in San Francisco, celebrates exceptional role models in the Girl Scout community and raised \$82,000 (net) for a variety of ongoing Girl Scout programs. More than 40 Older Girl Scouts attended the event as Table Ambassadors, hosting each table and talking with guests about their Girl Scout accomplishments.



JEFF STOVER CELEBRITY GOLF TOURNAMENT

Proving that golf is a team sport, former San Francisco 49er Jeff Stover once again brought more than 30 professional athletes along with area business leaders together to raise funds for Girl Scouts. For 11 years, Jeff and friends have hit the greens, most recently at Sevillano Links in Corning, to bring in Girl Scout green – in 2009, the tournament raised more than \$40,000 (net).

Jeff is proud to lend his support to Girl Scouting: "It's a program that we can trust and an organization that works hard to reach out to girls from all backgrounds." And we are proud to be on the same team with such loyal supporters as Jeff and all the tournament participants, sponsors, and volunteers!



BEYOND COOKIES & CAMPING: JULIETTE GORDON LOW AWARDEE MARISSA MAYER

We honored Marissa Mayer with the Juliette Gordon Low Award, which recognizes outstanding women in the community who are role models for girls and young women. Marissa is vice president of Search Products and User Experience at Google, and has made significant contributions in her field of work. The gala evening at Villa Ragusa in Campbell raised over \$52,000 (net) through sponsorship and a robust live auction, and featured local Girl Scouts in our Girls Go Tech program and members of the Space Cookie Robotics Team. We greatly appreciate the donations that we received for this event during our 2008 fiscal year (i.e. prior to October 2008) and recognized these donations in our 2008 Annual Report.



JEWEL OF A WOMAN HONORING KAY MARQUET

As we work to help girls grow strong, we are fortunate to know successful female role models who have paved the way. So, each year, we honor outstanding women at our Jewel of a Woman fundraiser in Santa Rosa.

For our 17th annual Jewel of a Woman event in 2009, we paid tribute to Sonoma County's Kay Marquet who had recently retired from her role as President and CEO of the Community Foundation Sonoma County. Kay has been instrumental in developing and distributing millions of dollars for non-profit organizations. We are grateful to our 150 supportive guests who joined us in lauding Kay's achievements and raising \$30,000 (net) at this fundraising dinner and silent auction.

OUR DONORS

Thank you for helping us get a girl started on her path.

"I've seen firsthand what a positive influence Girl Scouting can have on the development of young women. Both of my daughters grew into impressive young ladies with self esteem and strong leadership qualities instilled by the Girl Scout experience."

- Woody Shackleton, San Francisco Bay Area: retired corporate executive, Girl Scout dad

Corporations, Foundations and Organizations

\$250,000 +

Richard and Rhoda Goldman Fund

\$100,000 +

AT&T, AT&T California and AT&T Foundation

\$50,000 +

County of Santa Clara - Social Services Administration

Girl Scouts of the USA

S.D. Bechtel, Jr. Foundation

Silicon Valley Community Foundation

Tom and Neva Cotter

Handel Sunrise Foundation

Noella Levy

Shackleton Family Fund

G.W. Williams Foundation

Xilinx, Inc.

\$25,000 +

City of San Jose BEST Program

Little Brownie Bakers L.L.C.

Merrill Lynch - Global Philanthropy

The Sierra Club Foundation

\$10,000 +

Atkinson Foundation

Cisco Foundation

County of Sonoma - Probation Department

Crescent Porter Hale Foundation

East Bay Community Foundation

Jeanette & Mildred Meyers Fund

David B. Gold Foundation

The Guardsmen

Lockheed Martin Space Systems Company

The Thomas J. Long Foundation

SanDisk Corporation Fund

The San Francisco Foundation

Community Foundation Sonoma County

Schulz Donor Advised Fund

Symantec Corporation

van Löben Sels/RembeRock Foundation

Visa Inc.

Wells Fargo and Wells Fargo Bank, N.A.

YWCA of the Mid-Peninsula Donor Advised Fund of the

Women's Foundation of California

\$5,000 +

Applied Materials, Inc.

Ashdon Farms

BAE Systems

Best Buy Children's Foundation

Borel Private Bank & Trust Co.

The Capital Group Companies Charitable Foundation

The Clorox Company Foundation

Danford Foundation

Food & Beverage Industry

Jackson Family Enterprises

KPMG LLP

Lockheed Martin Employees' Foundation

Melvin F. & Grace McLean Foundation

Menlo Park Presbyterian Church

Pillsbury Winthrop Shaw Pittman LLP

PremierWest Bank

Rolling Hills Casino

San Francisco B.P.O.E. Lodge No. 3

Silicon Valley Bank Foundation

The Simon-Strauss Foundation

State Farm Foundation

Stellar Solutions Inc.

United Way of Northern California

US Bank (San Francisco, Redding)

Thelma Doelger Charitable Trust

\$2,500 +

Alexander & Baldwin Foundation

Anonymous (2)

Clover Stornetta Farms, Inc.

Kaiser Permanente & Kaiser Permanente Medical Center

Koret Foundation

Lee Hecht Harrison

Loomis Sayles and Company, L.P.

Lowell Berry Foundation

Redwood Credit Union

Rotary Club of Santa Rosa Foundation

Rudolph and Sletten, Inc.

Safeway Inc.

Seiler, LLP

Sierra Central Credit Union

Tehama County - Department of Education

United Way of Butte & Glenn Counties

Walmart (Anderson, Bentonville, Distribution Center #6026)

\$1,000 +

Adobe Systems Incorporated

Bell-Carter Foods, Inc.

Calistoga Community Chest

Coastal Business Systems
Colusa Casino Resort
The Darrow Foundation
DC Valve Mfg & Precision Machining
The Doering Family Foundation, LTD.
Ernst & Young LLP
Foor Foundation
Frank & Denise Quattrone
Foundation
G.W. Williams Foundation
The Heady Family Trust
Lam Research Foundation
Littler and
Littler Mendelson Foundation
Lundberg Family Farms
Medtronic Foundation
Miller Pacific Engineering Group
Northern California Grantmakers
Northern Trust
Pioneer Hi-Bred International, Inc.
Ross Neilon Post # 122
American Legion
Rotary Club of Los Gatos
R.W. Knudsen Family
San Francisco Giants
San Jose Water Company
Sonoma Technology Inc.
Soroptimist International of
Central Solano
Soroptimist International of Chico
St. Elizabeth Community Hospital
Target
United Methodist Women
Valero Benicia Refinery
Viking Skate Country
Waste Management
Wood Foundation

\$500 +

Asset Management Group
AYCO Charitable Foundation
Cal Fire
Chico Sports Club
Cleanrite-Buildrite
ConocoPhillips Company
County of Santa Clara -
Employee Giving Program
DeMeo DeMeo & West
Hans Diedricksen Trust
Exchange Bank
F.A.S.T. Lions Club
Fidelity Charitable Gift Fund
Goldman Sachs Philanthropy Fund
Heritage Education, Inc
Humboldt Sponsors
Intuitive Surgical, Inc.
Jewish Community Endowment Fund
The Kiwanis Club of Martinez
Madeline Murray Trust
Nordby Construction Company
ORACLE Arena & Oakland-Alameda
County Coliseum

Palo Alto Rotary Club
Annual Charities, Inc.
PEH HK, Inc.
Robert Half International
Rotary Club of Healdsburg
Rotary Club of Red Bluff
Soroptimist International of Ukiah
South San Francisco
Foundation for Youth
Stephen Stuart & True Love
The Carl Wilhelm Widnes
Memorial Fund
United Way California Capital Region

\$250 +

Bank of America Foundation
California Bank & Trust
C.F. Brennan & Company
Coding Foundation
DemandTec
Eric D. Fraser, D.D.S., M.S.
Gordon Fraser Pension Consultants
Gualala Redwoods, Inc.
Harvey Henningsen Portrait Artist
Hayfork Lions Club
Herguth Laboratories, Inc.
Humboldt Area Foundation
IBM Corporation - Employee
Giving Program
Ladies Auxiliary FRA - Unit 101
Max Machinery, Inc.
Rockpile Vineyard
Rotary Club of Los Altos
Santa Clara County
Airmen's Association
Scotia Volunteer Fire Department
Sierra Pacific Foundation
The Sports Basement, Inc.
Sutter Medical Center of Santa Rosa
Trader Joe's
The Trinity Trust

\$100 +

ADS Reprographics Inc.
African American Caucus
Amundson Physical Therapy
Boys & Girls Clubs of Marin and
Southern Sonoma County
Brady's Moving & Storage
Carly Girl, LLC
Chabot Space & Science Center
Chico Physical Therapy
Associates, Inc.
Chico Printing, Inc.
Clark Benefits, Inc.
Clark's Drug Store Pharmacy
Coldwell Banker Dufour Realty
Community United Methodist Church
Don Hemsteds North American
Endres Family Farm
Exloco
Feather Falls Casino

Golden Valley Bank
H.E. Pierson Co
Harper Motors
Jones Fort
Knife River Construction
Knights of Columbus San Rafael
Council 1292
Land O'Lakes, Inc.
Law Office of Anderson, Zeigler,
Disharoon, Gallagher & Gray
Law Offices of Michael T. Shepherd
Lions Breakfast Club of Chico
Miller Glass, Inc.
Moon Mountain Ranch
Northern California National Bank
NuStar Foundation
Oliver & Company
The Press Democrat
Quota International of Gridley
Real Mex Restaurants
Redding IOOF Lodge # 271
Reiner, Simpson & Slaughter, LLP
RSC Associates
Santa Rosa Symphony League
Sierra Nevada Brewing Co.
Smart & Final Charitable Foundation
Soaring Capital
Space Systems/Loral
Thomas Manufacturing
Company, LLC
United Religions Initiative

Matching Gifts

Note: Some companies do not release all employee names.

Abbott Laboratories Employee
Giving Campaign
Anita Hollister

Adobe Systems Incorporated
Denise Kruskamp

Applera Corporation
Leann Brooks Nassar

Applied Materials - Matching Gift
Program
Mija Brush
Nancy Quevedo
Stuardo Robles

ARGO GROUP, US
Marilyn A. Brands
Marlene Y. Gonzalez

BAE Systems
Kim Tran

Matching Gifts, continued

Bank of America - Matching Gifts Program,
Bank of America Foundation and
Bank of America United Way Campaign

Mary Amodio
Arlene Andrews
Ching-Hsueh Chuang
Christine I. Hills
Ann M. Sussman
Talitha Stone

Charles Schwab Foundation
Ann Woodbury

Chevron Humankind

Neeta Aggarwal
Anonymous
James W. Boessenecker
Janette R. Cushman
Deborah K. Donovan-Niemi
Gayle L. Ewy
Teresa K. Ferrell
Matthew J. Foehr
Denise A. Greenspan
Joyce M. Jew
Susann B. Nordrum
Ricardo M. Rendon
Sarah D. Saltzer
Michael R. Sequeira
Katy V. Woody
Sheila W. Yeh
Beverly M. Zalan

Cisco System Foundation-Matching Gift Program

Ellena Forrest
Scott Johnson
Patricia Justusson
Lisa Paul
Kenneth Pauley
Donald Pham
Ngoc L. Rodriguez

Costco - Redding

Ellena Forrest

Extreme Networks

Michele Harms

Gap Foundation Gift Match Program

Lara L. Pendleton

Google - Matching Gifts Program

Cesare Cremona
Cassandra Guy
Stephen Ng
Jessica Taylor

Hewlett Packard - Matching Gift Program &
HP Company Foundation

Carol Avina
Lori Fernandez
Joycelyn Fleet
Tracy Radle
Catherine Silveria
Krista Switzer

Honeywell Hometown Solutions

Cathy Ward

IBM Corporation-Matching Grants Program

Anonymous

Intel Involved Matching Grant Program

Anonymous employees and retirees

JP Morgan Chase & Co.

Stephen C. Brown

Juniper Networks - Matching Gift Program

Roberta Erb

Kaiser Permanente - Community Giving Campaign

Anonymous Donors
Kimberly W. Barnett
Katherine D. Gallagher
Tamara Hodge-Washington
Linda J. Kan-Huey
Mary P. Kastner
Janet Maisen
Sandra L. Rodgers
Elizabeth M. Smith
Pamela Wagner

Lam Research Foundation

Lynette Reyes

Lawrence Livermore National Laboratory, LLC

Anonymous Employees

Levi Strauss Foundation

Elizabeth McLean

Macy's Foundation

Ellen B. Kugler

Medtronic Foundation

Jeanette Fish

Microsoft Matching Gifts Program

Anne and Nicholas Whyte

National Semiconductor-Matching Gift Program

Anonymous

Olympus

Julia Younger

Pioneer Hi-Bred International, Inc.

Linda Castle

Shell Oil Products U.S.

Anonymous

Space Systems/Loral

Anonymous

The Capital Group Companies Charitable
Foundation

Susan Byrnes-Olson

The Clorox Company Foundation Employee Giving
Campaign

Terri J. Abner
Lyn M. Ignatowski
Cecilia Melby

The David & Lucile Packard Foundation Matching
Grant Program

Alisa Tamura

Tyco Electronics

Lynne S. Fovinci

VISA PAC

Anonymous
Rhonda Manter
Mary Ellen Richey

Girl Scout Groups

\$10,000 +

Diablo Day Camp

\$1,000 +

Alameda Service Unit 310

\$500 +

Dos Pueblos Service Unit 308

Troop 1323

Troop 30922

Troop 60021

Vacaville Service Unit 206

West Contra Costa Service Unit 329

\$250 +

Oakland Service Unit 303

Palo Alto Service Unit 601

South County Service Unit 393

Troop 30917

Troop 31827

Troop 32742

Troop 32757

\$100 +

Chico Service Unit 730

Crossroads Service Unit 309

Montgomery Village Service Unit 101

Orland Service Unit 716

Redwood Empire Service Unit 104

Sycamore Valley Elementary

Girl Scouts

Troop 31095

Troop 31466

Troop 31562

Troop 32110

Troop 32368

Troop 32672

Troop 60779

Vista Grande Elementary School

Girl Scouts

Families

Thank you to our family donors who gave \$100+ to our Family Partnership Campaign during our 2008-2009 membership registration!

\$1,000 +

Kertzman Family

\$500 +

Hasslen Family

Swihart Family

Thomas Family

Wong Family

\$250 +

Appert Family

Borch Family

Bowman Family

Cleberg Family

Damron Family

Edelstone Family

Goe Family

Gregory Family

Guthrie Family

Haber Family

Hahn Family

Hiller Family

Hoyem Family

Klingman Family

Lambertson Family

Manzo Family

Park Family

Perez Family

Tanner Family

Torrano Family

Truong Family

Walker Family

Zabrek Family

\$100 +

Acharya Family

Addis Family

Afework Family

Almas Family

Alonso Family

Anderson Family

Anderson Family

Anderson Family

Andresen Family

Armanino Family

Armour Family

Armstrong Family

Ashby Family

Athens Family

Au Family

Aylett Family

Azzolino Family

Ballesteros-Cordero Family

Barlow Family

Barnett Family

Bartolome Cruz Family

Beels Family

Benoit Family

Berg Family

Biddle Family

Biles Family

Bird Family

Blaettler Family

Blitz Family

Block Family

Boccignone Family

Bohn Family

Bohnhoff Blanco Family

Booth Family

Bortel Family

Boudreaux Family

Brackenbury Family

Bradley Family

Bremer Family

Bright Family

Brinckerhoff Family

Brobst Family

Brown Family

Buchsbaum Family

Burgess Family

Burley Family

Buscheck Family

Butensky Family

Butler Family

Butler Family

Cacia Family

Cairns Family

Camenzind Family

Campbell Family

Casey Family

Castellino Family

Chabra Family

Chadwick Family

Chandra Family

Chen Family

Cheng Family

Chesbrough Family

Chi Family

Chin Family

Chou Family

Christopulos Family

Chun Family

Chung Family

Clavet Family

Clay Family

Clayton Family

Coello Family

Coffman Family

Collard Family

Collier Family

Colson Family

Corridan Family

Crasta Family

Crook Family

Cuny Family

Curtis Family

Custodio Family

D'Andrea Family

Davidson Family

Davidson Family

Davis Family

Davis Family

Decker Family

Devore Family

Dewane Family

Dolan Family

Donahue Family

Dornsife Family

Drobny Family

Dugar Family

Dunn Family

Durham Family

Edelman Family

Engdall Family

Engelson Family

Families, continued

\$100 +, continued

Engstrom Family
Erb Family
Erickson Family
Erlund Family
Esterly Family
Estrada Family
Ewanich Family
Fallow Family
Fior Family
Firby Family
Fishwild Family
Fitzgerald Family
Flammer Family
Fong Family
Fong Family
Foster Family
Fowler Family
Franco Family
Franks Family
Freda Family
Freeman Family
Friedeberg Family
Friedman Family
Garber Family
Garrett Family
Gerringer Family
Ghumman Family
Gibbs Family
Gibson Family
Giles Family
Gisborn Family
Glodek Family
Gmerek Family
Goel Family
Goldwyn Family
Gordon Family
Grace Family
Grant Family
Green Family
Green Family
Greenstein Family
Grimshaw Family
Guernsey Family
Gulmon Family
Haller Family
Hanna Family
Hansen Family
Hargreaves Family
Hargreaves Family
Harris Family
Hawkins Family
Hayes Family
Heckel Family
Hemmat Family
Hern Family
Heron Family
Hewitt Family
Hodge Family
Hofmeister Family

Holland Family
Holland Family
Holt Family
Holterman Family
Houston Family
Houts Family
Howe Family
Hoyem Family
Huang Family
Huang Family
Huffman Family
Ikerd Family
Imai Family
Jaeger Family
Jensen Family
Jerman Family
Jurvetson Family
Kahan Family
Kalbfleisch Family
Kang Family
Kao Family
Kao Family
Kasiraj Family
Kastanis Family
Katleman Family
Kawadri Family
Keith Family
Kelley Family
Kemble Family
Kemmerer Family
Kenney Family
Khan Family
Khisa Family
Kim Family
Kimiecik Family
King Family
King Family
Kirsch Family
Knutson Family
Koch Family
Kogler Franklyn Family
Kontogiannis Family
Koo Family
Kovalik Family
Krishna Family
Kron Family
Kuboi Family
Kwiatkowski Family
Labuda Family
Lacaze Family
Lafontaine Family
Landis Family
Lang Family
Lapporte Family
Larson Family
Larson Family
Latourrette Family
Le Family
Lee Family
Lee Family
Lee Family
Leeker Family

Legaspi Family
Lenhu Family
Lescure Family
Leung Family
Levere Family
Lewis Family
Liao Family
Lin Family
Liu Family
Liu Family
Loftus Family
Look Family
Lopes Family
Lopez Family
Love Family
Lynch Family
Lyseggen Family
Ma Family
Mac Lean Family
Madsen Family
Magner Family
Mai Family
Malley Family
Mancebo Family
Marks Family
Markson Family
Martin Family
Martinka Family
Mateus Family
Mathis Family
Mayfield Family
Mays Family
McNulty Family
McQueen Family
Mendenhall Family
Metsers Family
Meyer Family
Meyer Family
Miletic Family
Miller Family
Miller Family
Miller Family
Mittmann Family
Monozon Family
Moore Family
Moran Family
Morton Family
Mozart Family
Mueller Family
Mulready Family
Munro Family
Murphy Family
Murphy Family
Murphy Family
Murray Family
Murray Family
Nadavi Family
Nakaji Family
Nassar Family
Natan Family
Nathlich Family
Neilson Family

Nella Family
Nelson Family
Nelson Twicken Family
Neuman Family
Nickison Family
Noble Family
Norton Family
Ogden Family
Okumura Family
Oleary Family
Osaki Family
Pace Family
Pachkowski Family
Palermo Family
Palma Family
Patterson Family
Paul Family
Phelps Family
Phillips Family
Pierotti Family
Pitsenbarger Family
Quinn Family
Rapaich Family
Rattner Family
Reid Family
Reihaneh Family
Rempel Family
Rhyu Family
Richardson Family
Riley Family
Riley Family
Robertson Family
Rodriguez Family
Rosenbaum Family
Roshan Family
Rowe Family
Rugar Family
Rus Family
Sabet Family
Salimi Family
Sandell Family
Sandusky Family
Sanford Family
Sangani Family
Scheel Family
Sчена Family
Schwab Family
Schwerdfeger Family
Sciamanna Family
Scott Family
Sears Family
Shaw Family
Sherman Family
Shin Family
Sippl Family
Sire Family
Smith Family
Smith Family
Smith Family
Smuda Family
So Family
Soares Family

Soares Family
Song Family
Sparvoli Family
Speir Family
St Pierre Family
Stallman Family
Stanger Family
Stanley Family
Stassinopoulos Family
Steakley Family
Stedman Family
Stein Family
Stewart Family
Stewart Family
Storey Family
Swenberg Family
Talaski Family
Taner Family
Tang Family
Taticcek Family
Tennant Family
Thapliyal Family
Thiele Sardina Family
Thomas Family
Thomas Family
Timpe Family
Ting Family
Tonsfeldt Family
Tou Family
Trang Family
Trask Family
Turek Family
Unger Family
Vais Family
Valentine Family
Van Duzer Family
Van Schooten Family
Vaughan Family
Vendelin Family
Verity Family
Vilhauer Family
Viviani Family
Vo Family
Voorhees Family
Walrath Family
Wang Family
Ward Family
Watson Family
Webb Family
Weber Family
Wei Family
Weiss Family
Westfield Family
Wheatley Family
Wheaton Family
Wilkinson Family
Williams Family
Williams Family
Wilson Family
Wilson Family
Winslow Family
Wong Family

Woods Family
Wright Family
Wu Family
Wucher Family
Yen Family
Yip Family
Zaki Family
Zamarian Family
Zhang Family
Zimmermann Family

Individuals

\$50,000 +

Handel Sunrise Foundation

\$10,000 +

The Shackleton Family Fund
Jean F. Schulz
Anne and Nicholas Whyte

\$5,000 +

Helen Hilton Raiser

\$2,500 +

Anonymous (2)
Diana L. Bell
Marilyn Anne Brands and Donna Hall
Marcie and Chet Brown
Joan K. Fritsche
Richard N. Goldman
Tom and Beverly Graham
Mary and Lon F. Israel
Byrd Lochtie
Marina Park
Jil A. Polniak
Debra B. Rossi

\$1,000 +

Allen Family
Christina Amber
Stephen Anderson
Anonymous
Anonymous-United Way
Carol Avina
Kimberly W. Barnett
Barsten Family
Nancy Berg
Chris and Andrea Borch
Andrea Bride
Leroy and Luanne Bright
Nancy Clark and Bill Broach
Valorie and Rich Carpenter
Jim and Faye Chapman
George W. Cogan and
Mary Frances Allen
Jack Conway and Linda Lococo
Esther A. Heller and
Nicholas A. Corsano
Tom and Neva Cotter
Mary B. Cranston

Individuals, continued

\$1000 +, continued

Dashiell Family
Denise M. Davis
Nancy and Michael Derbish
Teresa Gisske
Henry A. Gusman, CPA
Deborah and Russell Hall
Deborah Holden
Philip G. Horton
Bruce Hubbell
Jon and Elizabeth Leonard
Jody S. Lindell
Howard K. and Karen P. Loomis
Deborah A. Lynch
G.J. S. MacDonnell
The MacGillivray Family Foundation
Barbara A. Marchini-Ellis
Marissa Mayer
Lee and Charles McCaffree
Michelle McCormick and Sara Davis
Kenneth and Nancy Mednick
Michael and Suzanne Moshier
Kathi F. Mosle
Steve and Laurie Mullen
Coleen Murray
Sam and Kathryn Nicolino
Sheila Pallotta
Kenneth Pauley
Susan and Paul Renno
Ellen Richey
Stuardo and Laurette Robles
Cathy Rogers
Susan Rouder, Ph.D.
Ann Rutherford
Harold and Heidi Schoolcraft
Tammy and Robert Snyder
Diana Stanton
Dennis and Sally Swanson
Brian Sweeney
Maryett and Robert Thompson
James and Jeanne Toms
Nikki Van Ausdall
Fred Van Milligen and Janet Bishop
Erica Wallenbrock
Joyce and Bob Wieck
Alba B. Witkin
Sherri Lewis and Dave R. Wood
Carolyn and Edgar Worth
Sheila and Francis Yeh

\$500 +

Barbara Adachi
Anonymous (2)
Anonymous-Jewel
Marjorie M. Barnebey
Michael J. Beal
Sally Biggin
Linda and Jim Boessenecker
Linda Castle and Allen Wilcox
Linda L. Chew

Stephanie Chew
William K. Coblentz
Connie and Hugh Coddling
Kathryn K. Colemere
Elizabeth L. Colton
Paddy Coreris
Polly S. Cortez
Gene and Arletta Cortright
Barbara and James T. Curry, Jr.
Linda Dahlberg
Dan Dailey
Martha Daly
Maria C. Donat
Duff Family
Dorothea M. Dutton
Karen A. Fies
Matthew J. Foehr and Jane A. Beatty
John and Marcia Goldman
Philanthropic Fund
John and Laurie Grant
Mary W. Graves
Antoinette J. Kuhry
and Thomas A. Haeuser
Paul and Carol Henshaw
John and Laurie Kelm
Julie Kimelman and Larry Rogers
Alan and Carolyn King
Diane and Art Lafranchi
Barbara S. Lateer
Stephen Laughlin
Essie B. Lemons
Noella Levy
Dennis McEvoy and Kim Worsencroft
Trina Merriman
Connie Miller
Leslie Miller
Kim and Jay Mitchell
Jo and Ron Moss
Melinda L. Moss
Sean O'Day
Mary S. Okamura
Timothy R. Pearson, D.D.S.
Pam Pell and Nancy Johnson
Katherine Puntenev
Mike Quattro
Phillip and Victoria Raiser
Patricia Schnedar, CPA
Derald and Anna Simpson
Mark Sloan
Olena E. Snow
Peggy G. Soberanis
Robert and Carolyn Stevens
Joseph and Shari Teresi
Peter Thysell
Victor S. Trione
Shari VanLoo
Ron and Ingrid Voss
Rhonda A. Weber

\$250 +

Myra Albrecht
Kim Aldridge

Valerie J. Armento
Hilary Armstrong
Jeff and Barbara Atkinson
John and Andrea Barella
Susan Barich
Ken Becker
Liz Berg
Katherine K. Berman
Donna M. Born
Patricia and Clyde Bouligny
Brian Brockhouse
Jacquelyn Bazley
and Richard Brodzinsky
Sharon M. Burke
Samantha K. Burkey
Susan Byrnes-Olson
Leslie Carmichael
Elizabeth A. Christianson
Joseph Conlon Jr.
Erin E. Constantine
John Crosby
Jack D. Dakin
Irene and Robert Degl'Innocenti
Alice M. Dekker
Kathie Dietz
Dr. Mehdi Doroodgar
Chris Dyer
Susan Eagles-Williams
Edelstone Family
Margaret Elliott
Georganne Ferrier
and Steven Weinberg
Maud Fitzpatrick
Dorothy L. Furgerson
Marian L. Gade
Katherine D. Gallagher, M.D.
Cathy Gates
Barbara and Dean Gilson
Lois Gordon
John Gour
Julianna and Barrie Graham
Karen J. Gunderson
Twila Guthrie
Terri Hague
Michele Harms
Janice Hartz
Kenneth R. Hawley
Claire and Dick Heinzelman
Drs. Bryce and Jill Hetler
Jennifer Hood
Bryan Hoppe
Huey Family
Emily and Mike Humphrey
John Jay
Linda Kachiu
Linda J. Kan-Huey
Reggie Keyawa
Shoba Krishnan
Donna R. La Point
Jeff and Sharon Lamoree
Susan Leal
Calvin Liu

Lorraine Loo
Roberta C. Lycette
John and Heidi Magner
Janet Maisen
Tag and Joan Mansour
Dora Mao and James Lu
Mary Marsh
Teresa Mattingly
Peg G. McAllister
Joan McCall
Dr. Loyal and Jewell Miner
Dona Moberly and Jack Taylor
Luc Moyen and Jennifer Moyen-Logan
Ane Murphy
Clare M. Murphy
Joan E. Myers
Robert L. Myers
Louis and Susann Nordrum
Janice M. Oakley
Michael and Carolyn Osada
Gary Ostergren
Linda Pardini
Pamela Parkhurst
Fred and Amy Paulenich
Sandy and Bob Pete
Nancy Quevedo
Jennifer Raiser
Lauren Reaken
Colleen Reynolds
Richard Family
Joyce Richards
Joey and Barry Riggins
Allen and Cindy Ruby
Miguel Ruelas and Sid Hartman Fund
C. A. Runyan
Elizabeth Ruybal
Michael and Susan Sequeira
Barry Sherwood
Catherine Silveria
Charles H. Smith
Elizabeth Masalin Smith
Patricia A. Smith
Sandy and Bob Steele
Angeline Summers
Roselyne C. Swig
Mark S. Tarcha
Kit Thompson
Anne and Wally Trujillo
Skip Vanderbundt
Ann Watrous
William and Jane Wegner
Cindy and George Williams
Lee and Darryl Williams
Wendie L. H. Wu
Kathleen and George Young
Maria E. Young

\$100 +

Robert Abbe
Lauryn Agnew
Anne E. Ajlouni
Elisabeth Olney Anderson

Anonymous (11)
Suzanne Aoyagi
Nancy G. Appling
Paul and Elizabeth Archambeault
Marianne Arnstein
Joe Ray and Rebecca Baeza
Caroline Barlerin
Barbara H. Barratt
Mary Bates
Anne and Bob Benjamin
Judy and John Bennett
Tom and Susan Bernard
Kathryn Biggins
Diane Birchell
Sandra and William Blanch
Kimberly P. Blattner
Ricki A. Blau
Margaret Bomberg
Anne S. Bothwell
Grace E. Brawn
Melody A. Brown
Ruth C. Bruning
Debbie Brusco
Michael J. Clark, CPA
Susan Bernard Bryant
Ed and Jeanne Buckley
Brian Byrne
Zona R. Cafferata
Sara and Dennis Cakebread
Jeannette Wei and James Caldwell
Aneta L. Campbell
Carol L. Campbell
Claudia Carter
Jim and Anne Cashman
Sonja L. Cherry-Mendenhall
Lesley R. Clark
Clayton Cole
Cornelia Colen
Cooke Family
Judge and Mrs. John S. Cooper
Joshua G. Cooperman
Antoinette M. and
Bennett M. Coplan, M.D.
Bill Cornelius
Wulfrano and Stephanie Corrington
Bob and Danita Cowgill
Lynne E. Crawford
Elizabeth and Ken Crocker
Doreen J. Croft and Family
Billie Cummings
Janette R. Cushman, Ph.D.
Doris C. Daniels
Joan Dauria
Donna Davidson
Emma D. Davis
Mark and Christy Dawson
Laurie E. Deaton
Deras Family
Louise Detwiler
Jim Diangson
and Laura Martel-Diangson
Brenda and Dave Dixon

Heide M. Wilson
and Debra L. Doucette
Helen Dunlap
Joel Dunsmore
Mark Edleman
William and Sharon Eklund
Paul and Cheryl Elliot
Rose J. Endonila, D.D.S.
John and Tessa Ennals
Ken Evans
Scotti M. Faught
Julia and Steve Fenner
Dina C. Fenton
Lori Fernandez
Lorraine Fiamengo and Bill Tomkovic
Stephen Fick
Nancy B. Fischer
Laurie Fleck
Joycelyn Fleet
Michael and Sandina Forese
Amy Franklin-Willis
Dorothy and Phillip Frantin
Mary A. Fritz
Naomi Fukumori
Debbie and Bob Fung
Barbara Gallagher
David M. Gallegos
Margaret Gardner
Lisa Gemmiti
Kathy Gerdts
Robert Gibbs
Peter and Phyllis I. Gibney
Marsha K. Glantz
Sheryl Graab
Julia Grant
Gloria S. Green
Denise A. Greenspan
Jean A. Gress-Gordon
Glenn Griffin
Maryanne E. Guerini
John W. Harbaugh
Frances B. Hart
Rhoda Hauth
Mary J. Hendershot
Alan Henkel
Bob Henning
Ivar and Gail Highberg
Cam M. Hoang
Joseph Allen Hobson
Hanley and Marian Hoey
Linda D. Hom
Suzanne Hom
Donna Howard
Denis and Bernadette Hoye
Chuck Hughes
M. E. Huth
Sue and Michael Jacobs
Bridgette Jacobsen
Larry and Trish Jantzen
George and Barbara Jedenoff
Chris and Beth Johnson
Warren Jones

Individuals, continued

\$100 +, continued

Marilyn L. Jordan
Krista Juli
Miranda Jung
Mary P. Kastner
Tish Kilpatrick
Kenneth and Karin Kimiecik
Adam King
Edward King III
Kelly King
Sarah L. Kirkland
Kathleen A. Kirkpatrick
Judy and Norman Kirsch
Teresa Klein
Sydnie Kohara
Cynthia Kopec and Steve Berley
Anton and Crystal Korbas
Kevin and Kathryn Kranen
Teresa Krivan
Claire G. Lampson
Kathleen R. Laplante
Janet Larkin
L. S. Lasnik
Mary M. LeBlanc
Shannon J. Ledger
Linda M Lee
Mary Leff
Gary Hom
Pamela Lewis Kraft
Donald D. Leyden
Li Family
Susan L. Lindsay
Jim Linquist
Diane M. Lloyd
Ann and Todd Gunderson
Elizabeth Lococo
Judith Lococo
Leslie and Larry Lohse
Harry and Elinor J. Lott
Frances W. Love
Elinor and Wally Lowry
Susan Lucas
Luger Family
Rowena Magellanes
Mary Ann Maggiore
Anne G. Mahoney
Rush M. and Lois S. Manbert
Gail Mann and Pieter Buning
Rhonda Manter
Kay M. Marquet
Michael and Katherine Martin
Lyn Martin
Kevin Martz, Sr.
Ruth A. Mason
Sandy Masten
Robert Matcham
Nicholas and Arlene Matulich
Diane and Henry Mayo
Ann McClure
Nancy McCracken
Michael and Pat McGuire
Lynn McLean and Maureen Lenihan
Thomas K. McManus, Jr.
Darwyn Meyer
Dolores S. Monismith
James Rolph Moore
Carol Mordock
Denise and Terry Morehead
Michael Morishima
Beverly and Robert Morris
Sallie M. Morton
Randa Mulford
Donna Munic
Shawna Murphy
Walt Nehse
Neil Family
Nielsen Family
Elnor R. Nilsen
Barbara Novak
Susan Olney
Michele Olsen
Kelly O'Neil
Timothy and Kathy Osborne
Lilian Osborne
Kenneth R. Pangilinan
Lorri Pehoushek
Perez Family
Connie Petty
Donald and Hue Pham
Yen Pham
Lindsey K. Phillips
Patricia Phillips
Jim and Janel Pierce
Kristen Pierce
Marvin and Thelma Pinard
Steven and Wendy Ping
Donna Platou
Patricia Ponnay
Kimberly J. Popovits
Linda and Steve Powers
Catherine Priestley
Polly M. Quick
Tracy Radle
Yolanda Ramirez
Simon and Janise Ramos
Diane Reavis
Keith N. Reed
Mary Louise and Bill Reinking
Paul and Annabelle Resch
Dolores Reveles
June C. Reynolds
Jeffrey H. Richardson
Betsy Ricketts
Deidra E. Ridley
Mary Louise and John Riley
Linda and Doug Roberts
Marcia Rodgers and Garrett Loubé
Jill Roozee
Deborah Rossetto
Jane Rozga and Phil DeBar
Theresa S. Rude
Ryan Family
Bonnie Ryder-Bliss
Janice Sandy
Alice Sanford
Sande L. Schlaak
Mary Ann Schumann
Tim Avery and Julie Scopazzi
Lisa Scopazzi-Evans
Scrivner Family
Ann Sebastian
Debra Sells
Howard and Barbara Shaw
Lars Shaw
Sarah L. Sheehan
Karen L. Sheldon
Geri Sherrill
Charles Shinnamon
Silva Family
Bill and Ann G. Skeet
Melinda G. Slatt-Friedeberg
Dave Sloat
Howard and Muriel Smalheiser
Smerdel Family
Helen Smiler
Carolyn Smith
Mary Lou and Steven Smith
Mollie Smith
Paul and Annelies Squeri
Pat St. Clair
Max and Judy Steinke
Diana J. Stephens
Kimberly Stewart
Marcia Stewart
Michele and Todd Sundsmo
Carleen and Bryan Sutherlin and Family
Marilyn N. Swartz
Ron Sweeney
Brian and Katherine Tennant
Alice and Ron Theisen
Nola K. Theobald
Tye Thorson
Renee and Thomas Tolliver
Jim and Ginger Tolonen
Cecilia Tonsing
Lynne P. Towle
Neva Turer
James Umber, MD
Michael and Katherine A. Utsumi
Carolee and Royce Van Bebber
Elizabeth Van Laan
Carol E. Varcak
Shalini Venkatesh
Cindy and George Vierra
George P. Vila
Kerry Vincelli
Arthur and Susan Walenta
Derek P. Wapman
Calvin Warren
Patricia J. Webb
Bambi Weinberg-Tuttle
Corrie R. Weise
Sam and Andy Werback
Mary Ann and Bill Westfield

Barbara Eastes and Neil Wheeler
 Meredith A. White
 Hazel White Oak and Dusty Millar
 Jacinta Pister and John Whitmore
 Connie L. Wilson
 Deborah B. Wilson
 Nancy D. Wilson
 Susanne Wilson
 Margaret F. Wiltshire
 William and Marianne Witscher
 Edward and Jeanette Woodcock
 Woods Family
 Mike Woodworth
 Jane Ziad
 Jill Ziegler Cooper and James Cooper

Honorary Gifts

Anna, Eliza and Robin Sandell by
 Tish Kilpatrick
 Byrd Lochtie by Barbara H. Barratt
 Byrd Lochtie by Judy and John Bennett
 Byrd Lochtie by Marjorie V. Custis
 Byrd Lochtie by Jerrie & Robert Bartley
 Byrd Lochtie by
 Edward and Jeanette Woodcock
 Daisy Lee by Linda M Lee
 Dana Deras by Deras Family
 Esperanza Martinho by
 Goddard Family
 Jean Follette by Sylvia Ines de Trinidad
 Jean McClure by Ann McClure
 Jeanette & Ed Woodcock by Byrd Lochtie
 Joe Greenway by
 The MacGillivray Family Foundation
 Katie Hargreaves by Anonymous
 Kayla Alexandra Wood by
 Willie and Dan Shuck
 Linda Reaves by Jo and Ron Moss
 Margaret H. Stone by
 Laura Stone and Mike Keplinger
 Marie George by Denise Murphy
 Marina Park by Rockpile Vineyard
 Marisa Cidre by Corina Varela Pena
 Mildred Wingfield by Beth Wingfield
 Mimi Cross by
 Jan Setchko and Lana Hameister
 Nicole, Corrine and Catherine Cooper
 by Cooper Family
 Pam and Nancy's Wedding by
 Pam Pell and Nancy Johnson
 Pam Pell by Taura Anderson
 Pam Pell and Nancy Johnson by
 Kathleen K. Siple
 Pat and Tom Nilsen by
 Ann and Todd Gunderson
 Richard and Jeanette Aus by
 Sarah and Frank Jager
 Sheila Pallotta by
 The Kiwanis Club of Martinez

Susan Byrnes-Olson by
 The Capital Group Companies
 Charitable Foundation
 Terri and Karen by
 Linda and Jim Boessenecker
 The Girls Scout groups that meet at
 Ridgewood and Cutten Schools by
 Julie Osborne
 Villas Danbom by Patricia Ponnay

Memorial Gifts

Barbara Phelps by Ruth C. Bruning
 Carol Gallinat by Kim Aldridge
 Carol Myers by Robert L. Myers
 Charlotte Ogro by Jim and Rita Sweeney
 Clinton C. Reeder by Troop 60779
 Donald Kelley by
 Gene and Arletta Cortright
 Doris Newbery by Ann Watrous
 Dorothy Higbee by Gloria S. Green
 Dorothy Higbee by Bettie Scott
 Elizabeth Pauley by Kenneth Pauley
 Joanelle Heitzman-Gavagan by
 Carol Mordock
 Joe Carboni by
 Paul and Annelies Squeri
 Joe Carboni by
 Jim and Ginger Tolonen
 Linda Ziogas by Moraga Country Club
 Linda Ziogas by Ann Watrous
 Mike Gallagher by
 Candy and Pete McCorkell
 Millie Bessire by
 Esther A. Heller and
 Nicholas A. Corsano
 Millie Bessire by Catherine Welch
 Nita Harris by Jill Roozee
 Pat Ryan by Candy and Pete McCorkell
 Rachel Kwong by June C. Reynolds
 Rachel Kwong by Julie W. Barney
 Rachel Kwong by Louise Beattie
 Rachel Kwong by Pamela Bollard
 Rachel Kwong by Debbie Brusco
 Rachel Kwong by Susan Bernard Bryant
 Rachel Kwong by Betty J. Byrne
 Rachel Kwong by
 Jeannette Wei and James Caldwell
 Rachel Kwong by Linda Chang
 Rachel Kwong by
 George and Hetty Chong
 Rachel Kwong by Arlene J. Citron
 Rachel Kwong by
 Esther A. Heller and
 Nicholas A. Corsano
 Rachel Kwong by
 Doreen J. Croft and Family
 Rachel Kwong by
 Doreen and Bruce McLeod
 Rachel Kwong by Kathie Dietz

Rachel Kwong by
 Dave and Laurel Fleck
 Rachel Kwong by Sylvia Fong
 Rachel Kwong by Wilmer Fong
 Rachel Kwong by Debbie & Bob Fung
 Rachel Kwong by Linda Fung
 Rachel Kwong by Cynthia Lee Gong
 Rachel Kwong by
 Alfred and Sharlene L. Hall
 Rachel Kwong by
 Hanley and Marian Hoey
 Rachel Kwong by Linda D. Hom
 Rachel Kwong by Suzanne Hom
 Rachel Kwong by Farris C. Horak
 Rachel Kwong by
 Ronald and Nancy Hughes
 Rachel Kwong by
 Keith and Karen Johnson
 Rachel Kwong by
 Judy and Norman Kirsch
 Rachel Kwong by Joanne Koltnow
 Rachel Kwong by Janet Larkin
 Rachel Kwong by Linda Larkin
 Rachel Kwong by John Lee
 Rachel Kwong by Sandra Lee
 Rachel Kwong by
 Mary and Dayton Leong
 Rachel Kwong by
 David and Elizabeth Lew
 Rachel Kwong by Gary Hom
 Rachel Kwong by Li Family
 Rachel Kwong by Michele Louie
 Rachel Kwong by
 Jean and Richard Lym
 Rachel Kwong by Alice P. Maher
 Rachel Kwong by Joyce Maienschein
 Rachel Kwong by Barbara McLeod
 Rachel Kwong by Teri Meadows
 Rachel Kwong by Coleen Murray
 Rachel Kwong by
 Raymond and Helen Yip Ong
 Rachel Kwong by Rebekah L. Owen
 Rachel Kwong by Lisa Potter
 Rachel Kwong by
 Michael and Sandra Roberts
 Rachel Kwong by Harry and Leila Sen
 Rachel Kwong by Helen L. Stichler
 Rachel Kwong by Lisa Slaninka Flynn
 Rachel Kwong by
 Paul and Annelies Squeri
 Rachel Kwong by
 Harold and Sylvia Suen
 Rachel Kwong by Michele M. Sullivan
 Rachel Kwong by
 Carleen and Bryan Sutherlin
 and Family
 Rachel Kwong by Joseph & Shari Teresi
 Rachel Kwong by Nathan & Su Lee Tom
 Rachel Kwong by Ann Watrous
 Rachel Kwong by Eileen J. Wong
 Rachel Kwong by
 Paul and Myrtice Wong

Memorial Gifts, continued

Rachel Kwong by Alan and Rachel Wong
Sally Jackson by Tom and Beverly Graham
Sharon C. Wagner by Marcie and Chet Brown
Susan B. Jordan by Samantha K. Burkey
Tom Armstrong by Paul and Annelies Squeri
Tom Armstrong by Ann Watrous
Viola Rouder by Susan Rouder, Ph.D.
Virginia Marshall by Susan Abbott
Virginia Marshall by Sally Biggin
Virginia Marshall by Laura Lee George
Virginia Marshall by Connie L. Wilson

Leaving a Legacy

Thank you to our donors who have included us in their estate plans.

Friendship Circle and Silver & Gold Society

Henry Ainlay, Jr.
Katie Anderson
Anonymous (4)
Nancy Berg
Frank Bette
Bonnie Bliss
Walter J. Bobkiewicz III
Patricia Boese
Marcie Brown
Samantha K. Burkey
E. K. Butler
Carol L. Campbell
Leslie Carmichael
Martha D. Collins
Polly S. Cortez
Beverly De Lisle
Saman Dias
Dorothea M. Dutton
Karen Malmstrom Eckhart
Tessa Ennals
Dorothy Forsyth
Marian L. Gade
Beverly Graham
Kelli Green
Nancy Handel
Sandy Holmes
Philip G. Horton
Carol Hoskins
Dianne Lamendola
Jody S. Lindell
Linda Lococo
Pamela Mantegani
Michelle McCormick
Pat McGuire
Nancy Mednick
Linda Mock
JoAnne Neil
Mary S. Okamura
Judith Pick
Joyce Richards

Julie Rotolo
Susan Rouder, Ph.D.
Barbara Shaw
Cea and Jack Soares
Cari Lyn Stanton
Jeanne Toms
Rose Ann Triplett
Patricia J. Webb
Sara Wigh
Deborah E.G. Wilder
Sherri Lewis and Dave R. Wood
Wendie L. H. Wu

Gifts In Kind

\$50,000 +

Pillsbury Winthrop Shaw Pittman LLP

\$25,000 +

Garaventa Properties
KPMG LLP
San Jose Magazine

\$10,000 +

Mortar
The North Face
Scrap Attack
Second Harvest Food Bank

\$5,000 +

City of Point Arena
The Press Democrat
Rolling Hills Casino
San Francisco Business Times
Tova's Day Spa

\$2,500 +

Chalk Hill Estate Vineyards & Winery
Universal Audio, Inc.

\$1,000 +

Barnes & Noble Booksellers
Chico Sports Club
Coding Enterprises
Cooper-Garrod Estate Vineyards
Greater Redding Service Unit 722
The Grill on the Alley
Harvey Henningsen Portrait Artist
Linda Heiser
Chris and Beth Johnson
Joseph George Wines
Kendall Jackson Wine Estates, LTD.
Mid Valley Title & Escrow Co.
Barbara Oddone
Timothy and Kathy Osborne
Gaston Periat
Radio Chico
Ray Morgan Co.
S. H. Silver Company
Tim Avery and Julie Scopazzi

Sevillano Links
Shackleton Family
Sonoma Mission Inn Golf
Nisha Thatte-Potter and John Potter
Ultimate Water Wars
Vagabond Inn

\$500 +

Advertising Associates Corp
Ashdon Farms
Carol Kay's Art & Design
Marcie and Chet Brown
Chico Sports LTD
Corning Ford
Friedman's Home Improvement
The Jack Conway Jazz Ensemble
Klutz
Korbel Champagne Cellars
Northern Trust
Pacific Laser Design
Jim and Janel Pierce
Helen Hilton Raiser
Sony Electronics Inc.
Stephen Stuart & True Love
Suron Enterprises
The Vintage Experience
Two Linda's Catering
Joyce and Bob Wieck

\$250 +

AAA Vacuum and Sewing
Avalon Portraits
Jill Batterson
Chardonnay Golf Club
Disneyland Resort
Face
Mary Ferwerda
For Pete's Sake Art Studios
Lynnette Gerbert
Heitz Wine Cellars
Jack and Jills
Kelly-Moore Paints
Longs Drugs - Marina
Mount View Hotel & Spa
Oil Stop
Planet Beach
Quilts and Things
Debra B. Rossi
Round Table Pizza - Calaveras Blvd
San Jose Sharks
Starbucks Coffee - Marlow Road
StyleMatch.com
Time Out Services
Wilcox Golf Course

\$100 +

Anonymous
Artesa Winery
Benbow Inn
The Black Swan Boutique
Bring Rover Over

Bryce Hetler, DDS
Cafe Saraforia
Cakebread Cellars
Chalk Hill Service Unit 107
Community School of Music and Art
Digital Print & Design
Leigh Dimpflmaier
Expressway Self Storage
Fourth Street Bowl
The Galley
Greater Oroville Service Unit 717
Gina Grandolfo
Hafner Vineyard
Hilton Garden Inn
Dianne and Frank Hodges
Home Depot - Blossom Hill
Infineon Raceway
Kathy Johanson
Debra and Joel Kass
La Strada
Lake Almanor West Golf Course
Little River Inn
Los Altos Garden Supply
Mark West Service Unit 118
Sandy Masten
Ann McDowell
Montgomery Village Service Unit 101
Mountain Sports
Napa Service Unit 203
Rudy Navarro
North Coast Brewing Co, Inc
Olde Golde Estate Jewelry
Paradise Service Unit 718
Pasta Grille - Crown Plaza Hotel
Perfect Tan
Redwood Empire Service Unit
Joey and Barry Riggins
Rincon Valley Service Unit 102
Paul and Karen Roberts
Suleyman and Renee Sabankaya
San Jose Giants
Sierra Nevada Brewing Co.
Snoopy's Home Ice Arena
Speck Products - Sandbox Strategies
Starbucks
Surplus City
TAP Plastic
Techni Graphics
UNISOURCE
Upper Valley Service Unit 205
Vito's New York Trattoria
Walker Printing
Wal-Mart Store #2989
Willows Service Unit 711
Jane Ziad



Girl Scouts of Northern California
 7700 Edgewater Drive, Ste. 340
 Oakland, CA 94621



Our Territory

Nationwide there are over 100 Girl Scout councils. Girl Scouts of Northern California serves a diverse membership of 50,000 girls and over 31,000 adult volunteers in a nineteen-county area from Gilroy to the Oregon border– Alameda, Butte, Contra Costa, Del Norte, Glenn, Humboldt, Lake, Marin, Mendocino, Napa, Santa Clara, San Francisco, San Mateo, Shasta, Siskiyou, Solano, Sonoma, Tehama, and Trinity counties.

Girl Scouts of Northern California (800) 447-4475 • www.GirlScoutsNorCal.org

Eureka Service Center
 3203 T Street
 Eureka, CA 95503
 T: (707) 443-6641
 F: (707) 443-0496

Red Bluff Service Center
 933 Jackson Street
 Red Bluff, CA 96080
 T: (530) 528-8655
 F: (530) 528-8694

Chico Office
 50 Landing Circle
 Chico, CA 95973
 T: (530) 343-1904
 F: (530) 343-6465

San Jose Office
 1310 South Bascom Avenue
 San Jose, CA 95128
 T: (408) 287-4170
 F: (408) 287-8025

Redding Office
 2217 Hilltop Drive
 Redding, CA 96002
 T: (530) 221-6180
 F: (530) 221-5340

Mendocino County Service Center
 499 Leslie Street
 Ukiah, CA 95482
 T: (707) 463-2888
 F: (800) 764-7322

Oakland Office
 7700 Edgewater Drive, Ste. 340
 Oakland, CA 94621
 T: (510) 562-8470
 F: (510) 633-7925

Santa Rosa Office
 4825 Old Redwood Highway
 Santa Rosa, CA 95403
 T: (707) 524-9210
 F: (707) 544-5477